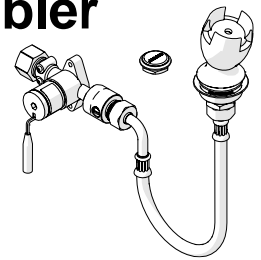


# Ezy-Drink<sup>®</sup> SS Remote Electronic Drinking Bubbler Tap - Battery

PRODUCT CODE:

- TD15XEB



## SPECIFICATIONS

- Drinking taps are designed to operate at full mains pressure.
- The rubber mouthguard is resistant to fungal and bacterial attack and has a high resistance to sunlight.
- Adjustable built-in flow restrictor.

**IMPORTANT:** All Ezy-Drink<sup>®</sup> bubbler taps are tested in accordance with AS/NZS 3718 and leave our premises in good working order.

## TECHNICAL DATA

Inlet		1/2" BSP - Female
Outlet		Rubber mouthguard
Headwork		Piezo Activation
Working Pressure Range (kPa)	Min	50
	Max	500
Working Temperature Range (°C)	Min	5
	Max	60
Nominal Flow Rate (LPM)		1.44
Sensor	Type	Piezo
	Activation	Piezo Button
Controller	Input Voltage	6.75V DC
	Program type	Standard
	Connections	6mm 2 Pin Plug
Solenoid	Input Voltage	6V DC
	Cable length	90mm
Finish		Stainless Steel

**NOTE:** Galvin Specialised continually strive to improve their products. Specifications may change without notice.

## TOOLS REQUIRED

- Power drill
- Spanner or adjustable crescent
- Screw driver

## PRE-INSTALLATION - MOUNTING DETAILS

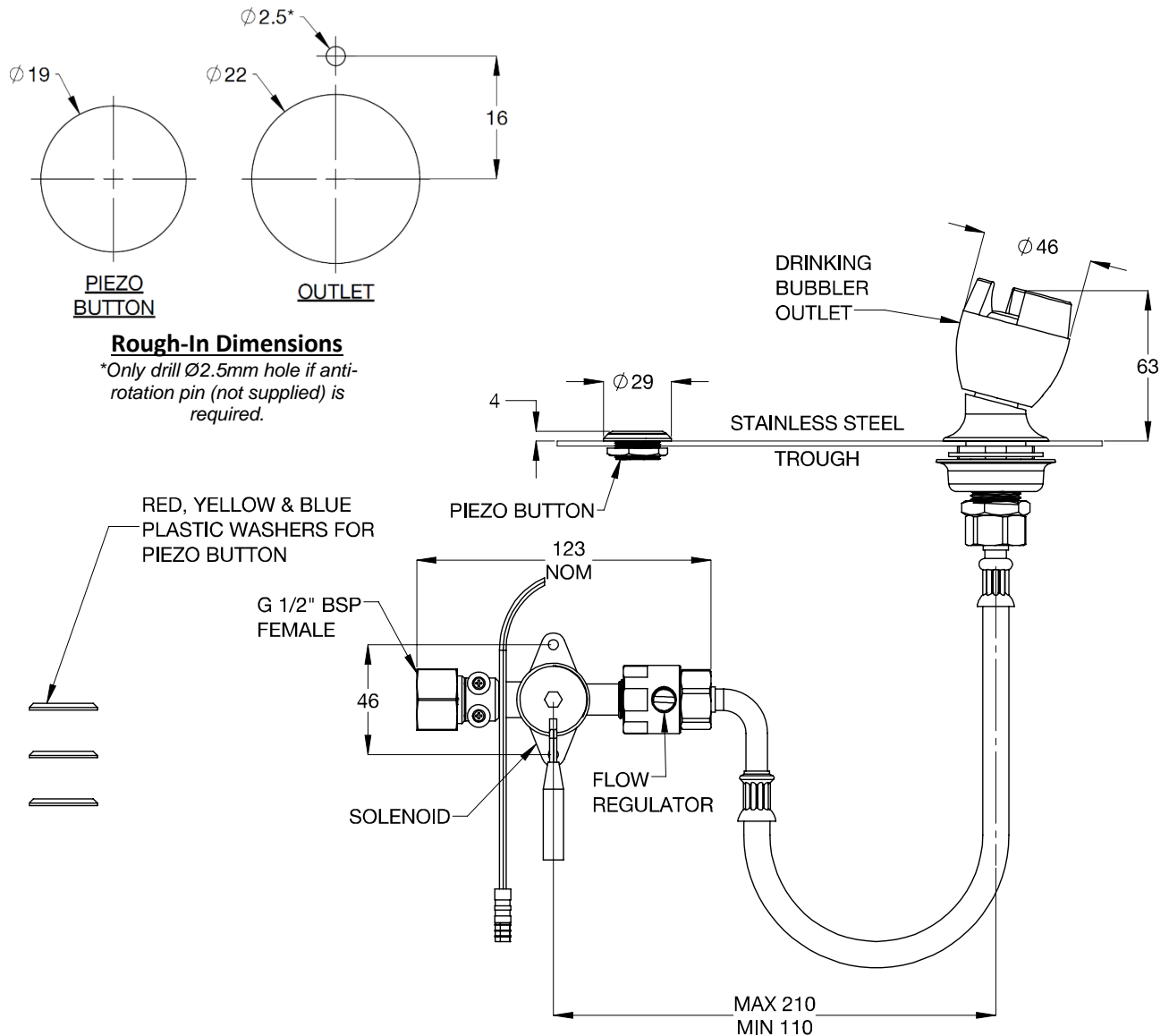
**Controller programming is locked. If specific changes need to be made, contact Galvin Specialised.**

- If the mounting holes do not already exist, mark out and drill the holes in the bench/trough, as shown in rough-in dimensions.

*Note: Supplied flexi hose length is 250mm long. Max distance between solenoid and outlet is 210mm.*

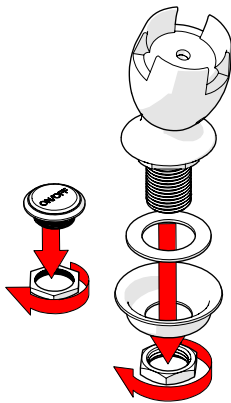
*Note: Before installation, all lines must be flushed.*

*We recommend that a line strainer be installed prior to drinking taps to eliminate any foreign material.*



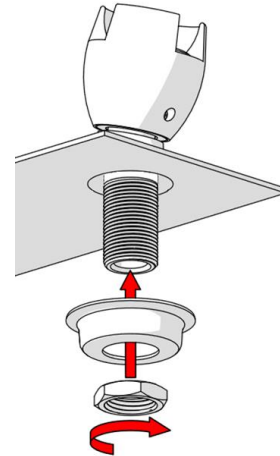
## INSTALLATION

**IMPORTANT:** Galvin Specialised products must be installed in accordance with these installation instructions and in accordance with AS/NZS 3500, the PCA and your local regulatory requirements. Water and/or electrical supply conditions must also comply to the applicable national and/or state standards. Failing to comply with these provisions shall void the product warranty and may affect the performance of the product.



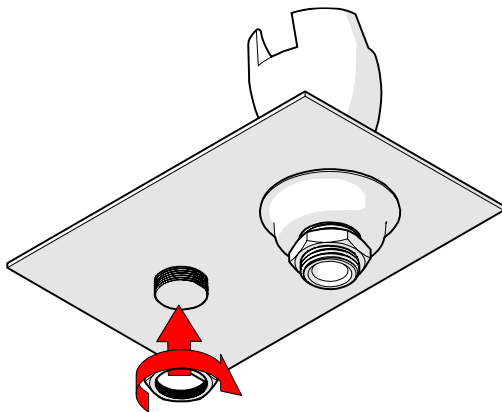
### 1. Disassemble piezo button and outlet

- Remove backnuts and washers as shown.



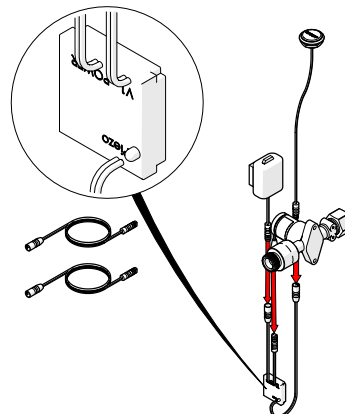
### 2. Fit mouthguard outlet

- Fit the mouthguard outlet into the trough.
- Ensure the sealing rubber washers are placed underneath the mouthguard outlet body.
- Secure underneath with the supplied cup washer and back nut.



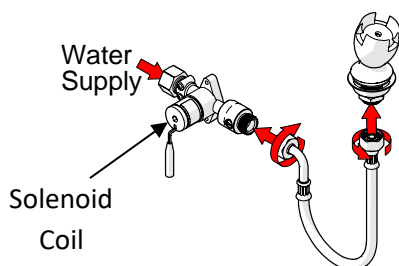
### 3. Fit Piezo Button

- Install piezo button as shown.
- Ensure the correct coloured washer is fitted underneath the button.



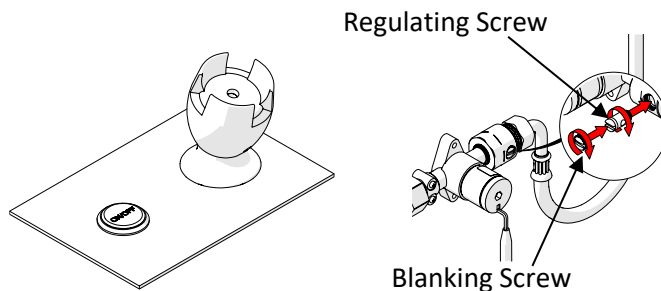
### 4. Connect Piezo Button, Solenoid and Battery

- Connect Piezo button, the solenoid & the battery to the electronic control unit.
- The unit is supplied with 2 x 3.2metre extension leads for connecting to battery and solenoid.



### 5. Fit Solenoid and Outlet

- Fix the solenoid in position ensuring that the solenoid coil is not facing downwards.
- Fit flexi hose to solenoid and water supply.
- Fit flexi hose to outlet.



### 6. Testing

- Once the drinking tap has been installed and tested for leaks, the water height may be adjusted to suit the available pressure as shown above.
  1. Remove the blanking screw.
  2. Adjust the water height by turning the regulating screw.
  3. Once desired height has been achieved, replace blanking screw.

**Note: The full range from minimum flow to maximum flow is only ¼ turn.**

## TROUBLESHOOTING

PROBLEM	CAUSE	RECTIFICATION
Water is not flowing from tap	Water is turned off	Turn on water
	Blocked flow regulating screw	Remove regulating screw and clean
Rate of flow inadequate	The flow regulating screw may not be adjusted correctly	Remove blanking screw and adjust flow regulating screw as described above

## WARRANTY

The warranty set forth herein is given expressly and is the only warranty given by the Galvin Engineering Pty Ltd. With respect to the product, Galvin Engineering Pty Ltd makes no other warranties, express or implied. Galvin Engineering Pty. Ltd. hereby specifically disclaims all other warranties, express or implied, including but not limited to the implied warranties of merchantability and fitness for a particular purpose.

Galvin Engineering Pty Ltd products are covered under our manufacturer's warranty available for download from [www.galvinengineering.com.au](http://www.galvinengineering.com.au). Galvin Engineering Pty Ltd expressly warrants that the product is free from operational defects in workmanship and materials for the warranty period as shown on the schedule in the manufacturer's warranty. During the warranty period, Galvin Engineering will replace or repair any defective products manufactured by Galvin Engineering without charge, so long as the terms of the Manufacturer's warranty are complied with.

The remedy described in the first paragraph of this warranty shall constitute the sole and exclusive remedy for breach of warranty, and Galvin Engineering Pty Ltd shall not be responsible for any incidental, special or consequential damages, including without limitation, lost profits or the cost of repairing or replacing other property which is damaged if this product does not work properly, other costs resulting from labour charges, delays, vandalism, negligence, fouling caused by foreign material, damage from adverse water conditions, chemical, electrical or any other circumstances over which Galvin Engineering has no control. This warranty shall be invalidated by any abuse, misuse, misapplication, improper installation or improper maintenance or alteration of the product.

Within Australia: 1300 514 074 Outside Australia: P: +61 (0)8 9338 2344

F: +61 (0)8 9338 2340

[sales@galvinengineering.com.au](mailto:sales@galvinengineering.com.au)

[www.galvinengineering.com.au](http://www.galvinengineering.com.au)

ABN: 78 008 719 382

PERTH | SYDNEY | MELBOURNE | BRISBANE | ADELAIDE

